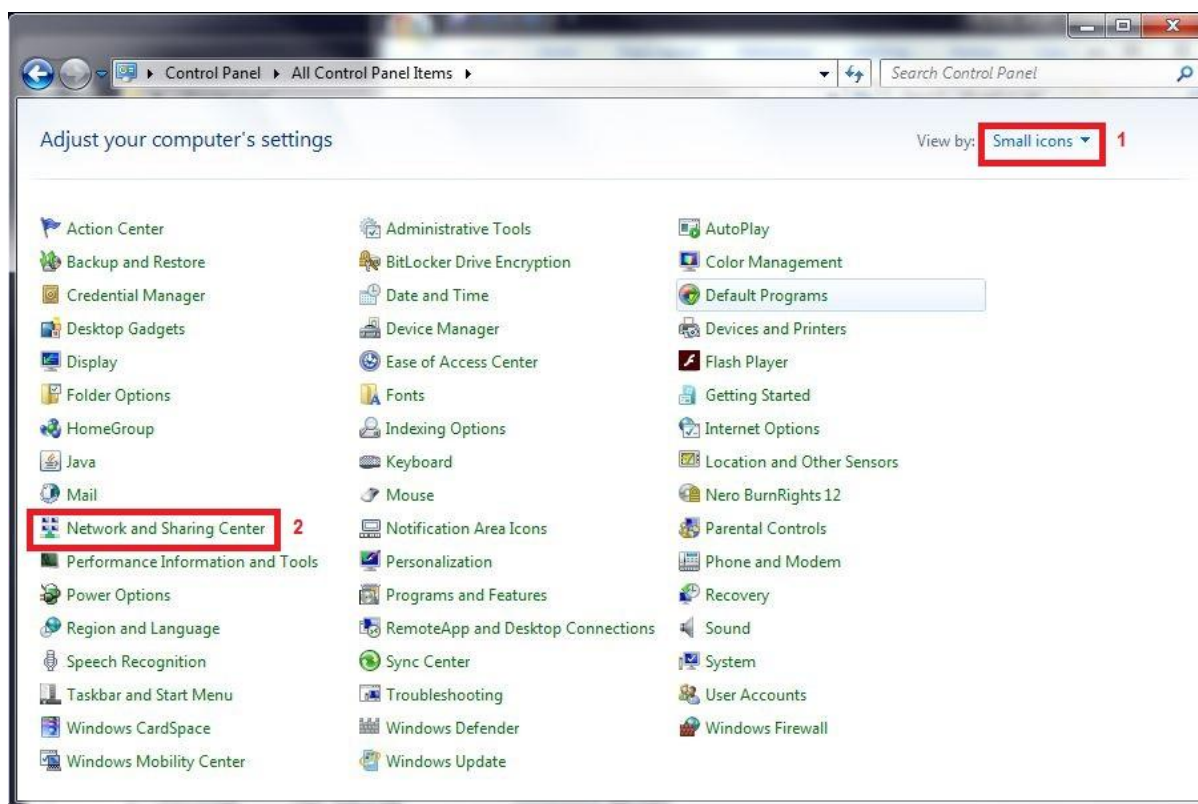
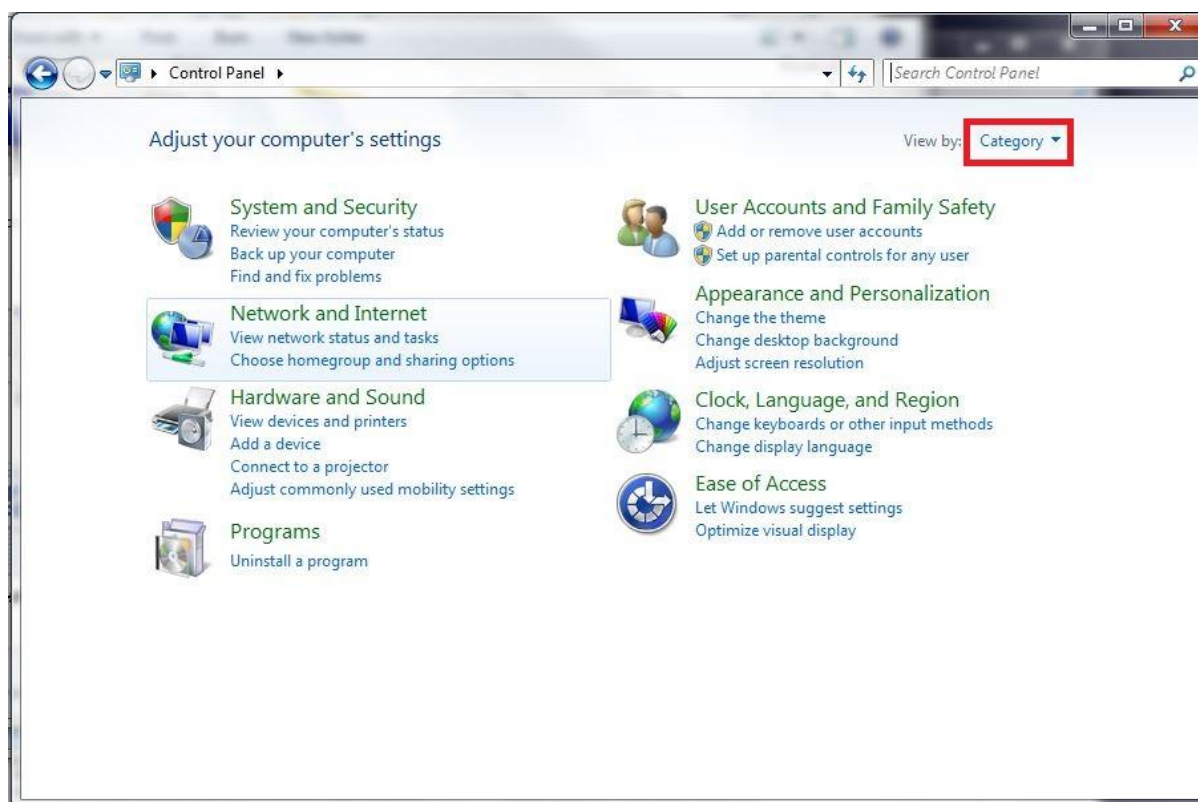
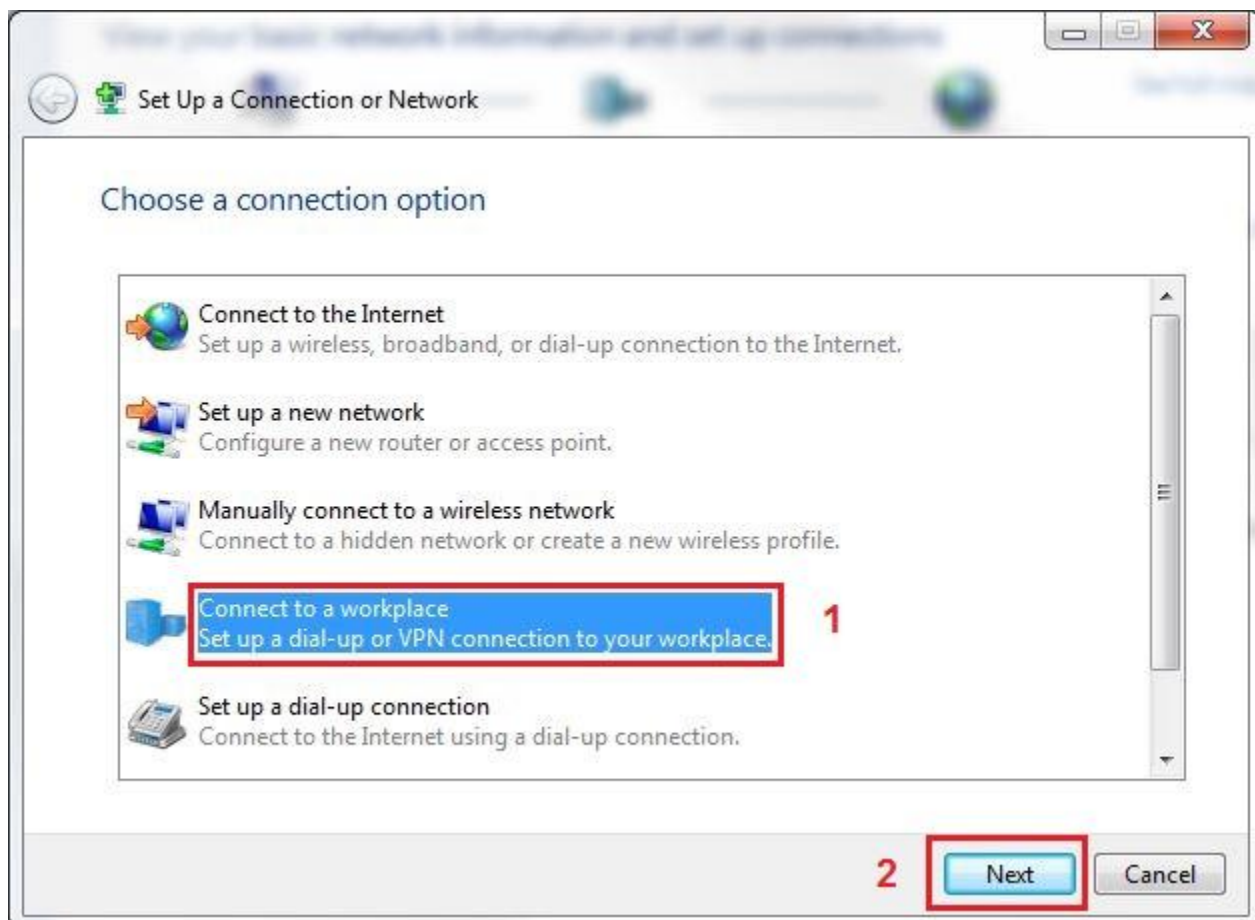
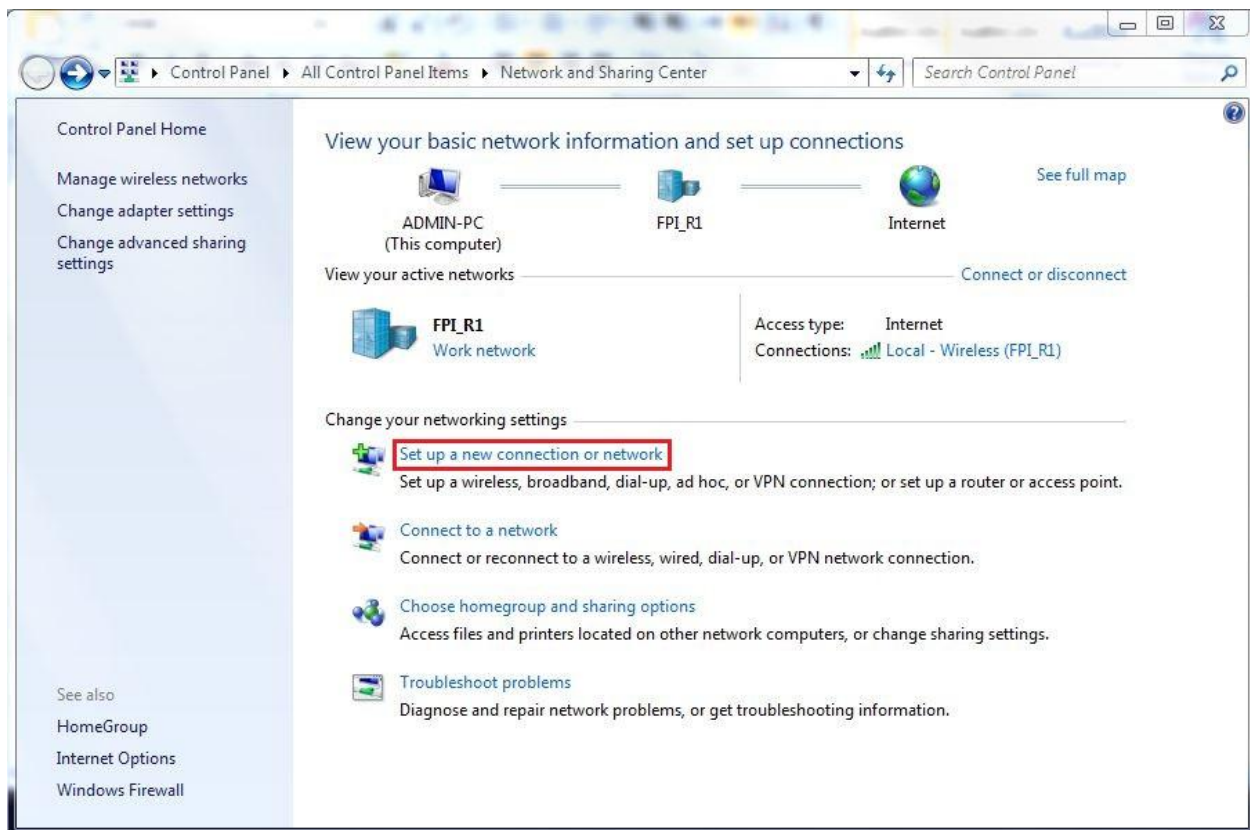
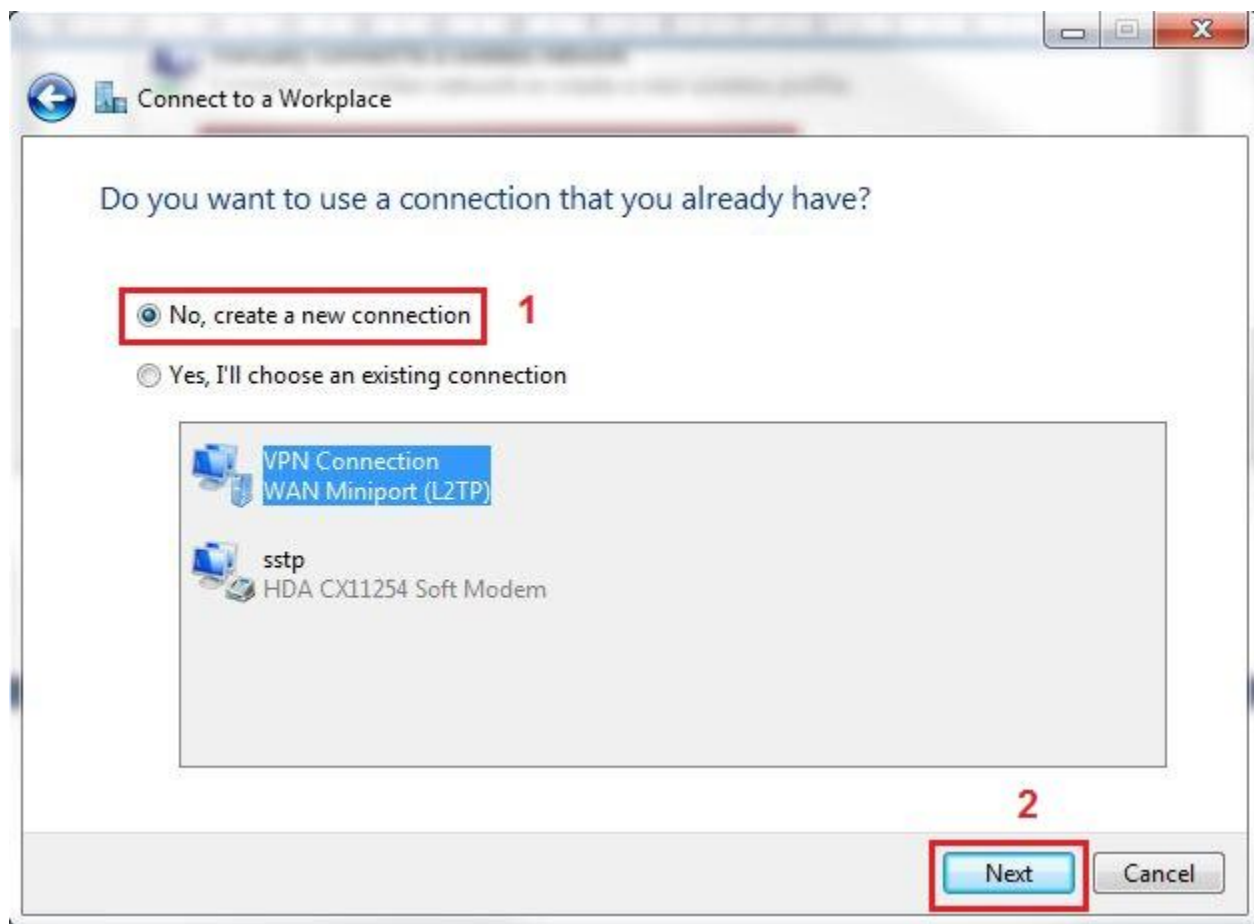


## راهنمای نصب دستی کانکشن PPTP ثبت احوال

از منوی استارت Control Panel را باز نمایید.







Connect to a Workplace

Type the Internet address to connect to

Your network administrator can give you this address.

Internet address: 10.21.243.123 1

Destination name: Sabt\_SSTP 2

☐ Use a smart card

☐ Allow other people to use this connection  
This option allows anyone with access to this computer to use this connection.

☒ Don't connect now; just set it up so I can connect later 3

4 Next Cancel

Connect to a Workplace

Type your user name and password

User name: | کد دفتر بدون SS 1

Password: | پسورد 2

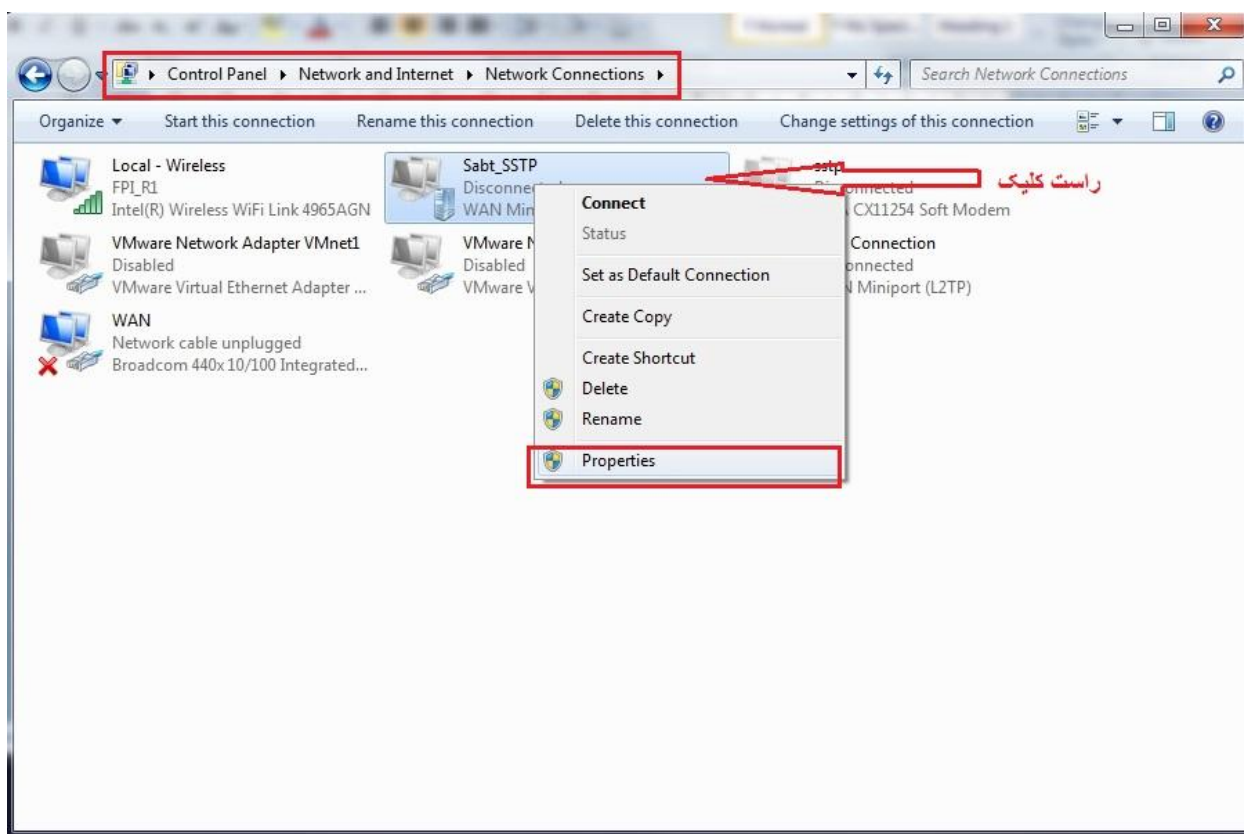
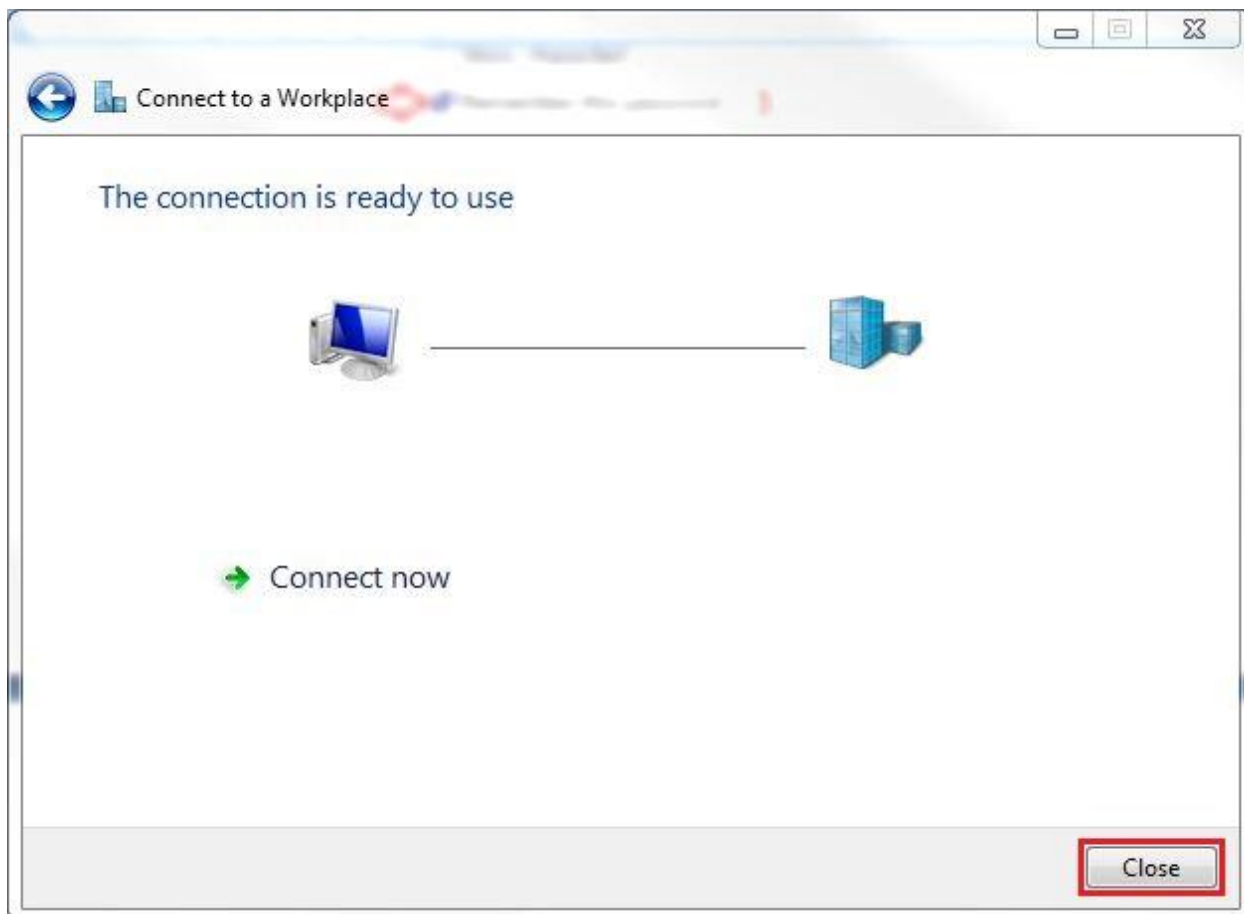
☐ Show characters

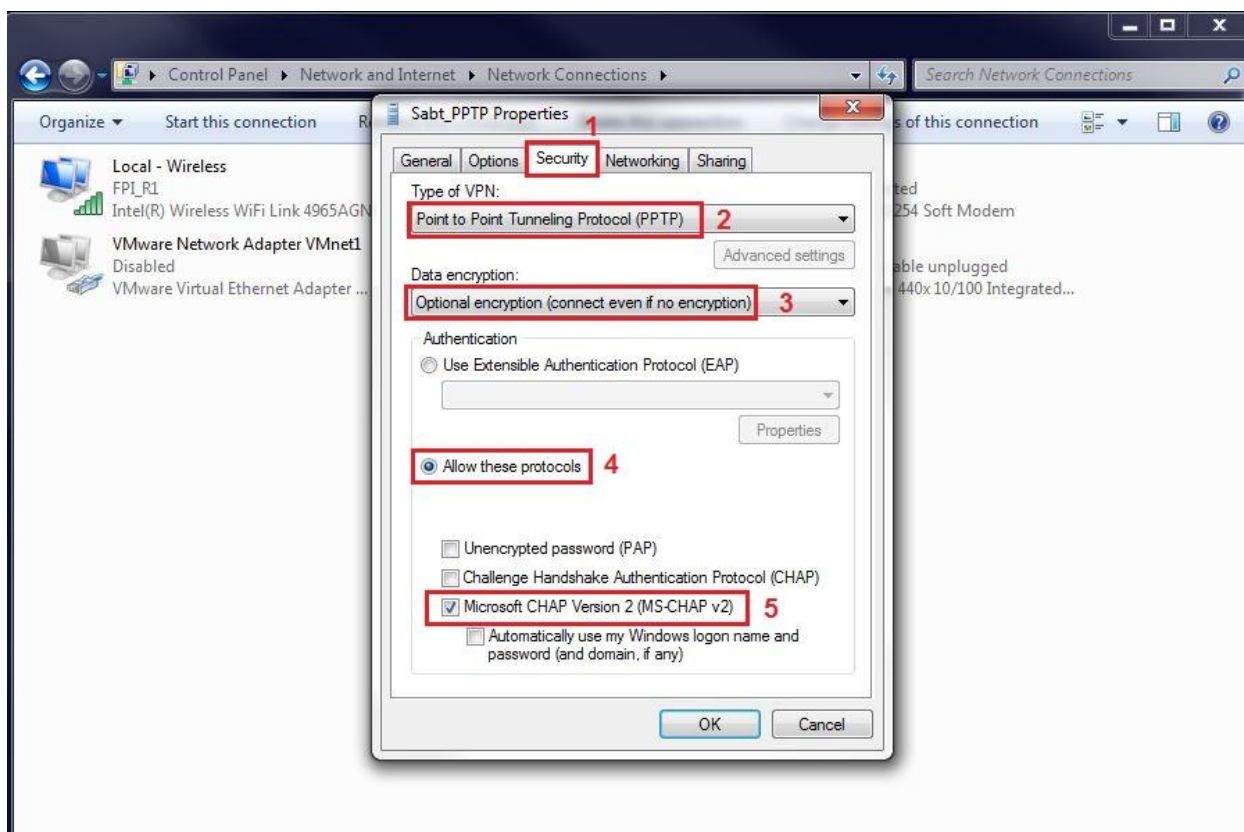
☒ Remember this password 3

Domain (optional):

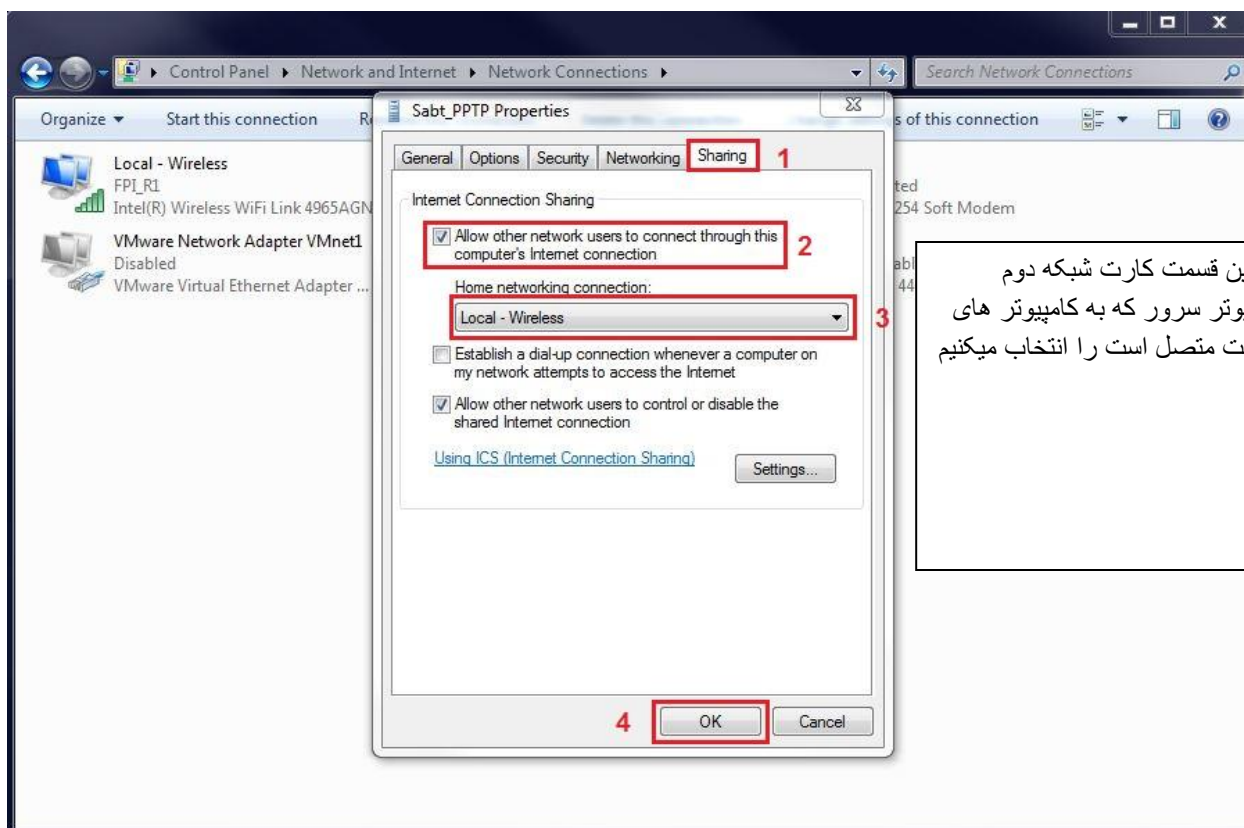
4 Create Cancel







نحوه به اشتراک گذاری کانکشن :



در این قسمت کارت شبکه دوم کامپیوتر سرور که به کامپیوتر های کلاینت متصل است را انتخاب میکنیم

## SABT AHVAL

